

A dark, high-angle photograph of a stage design workshop. The scene is filled with a complex network of black metal scaffolding, cables, and various pieces of equipment. A camera is mounted on a stand in the upper left. In the center, a small stage set is visible, featuring a backdrop with classical columns and a red, abstract sculpture. A control panel with several red buttons is in the lower left. The overall atmosphere is technical and creative.

Portfolio

Marie Waltemode

Stage Design

A close-up, high-angle photograph of a scenic painter's workspace. The painter's hands are visible, working on a large, vibrant painting of a landscape with swirling green and blue patterns. The workspace is cluttered with various painting supplies, including a white bucket of blue paint, a palette with yellow and red paint, and brushes. The lighting is focused on the painting, creating a dramatic effect.

Scenic Painting

Contact:

Mail: mariewaltemode@icloud.com

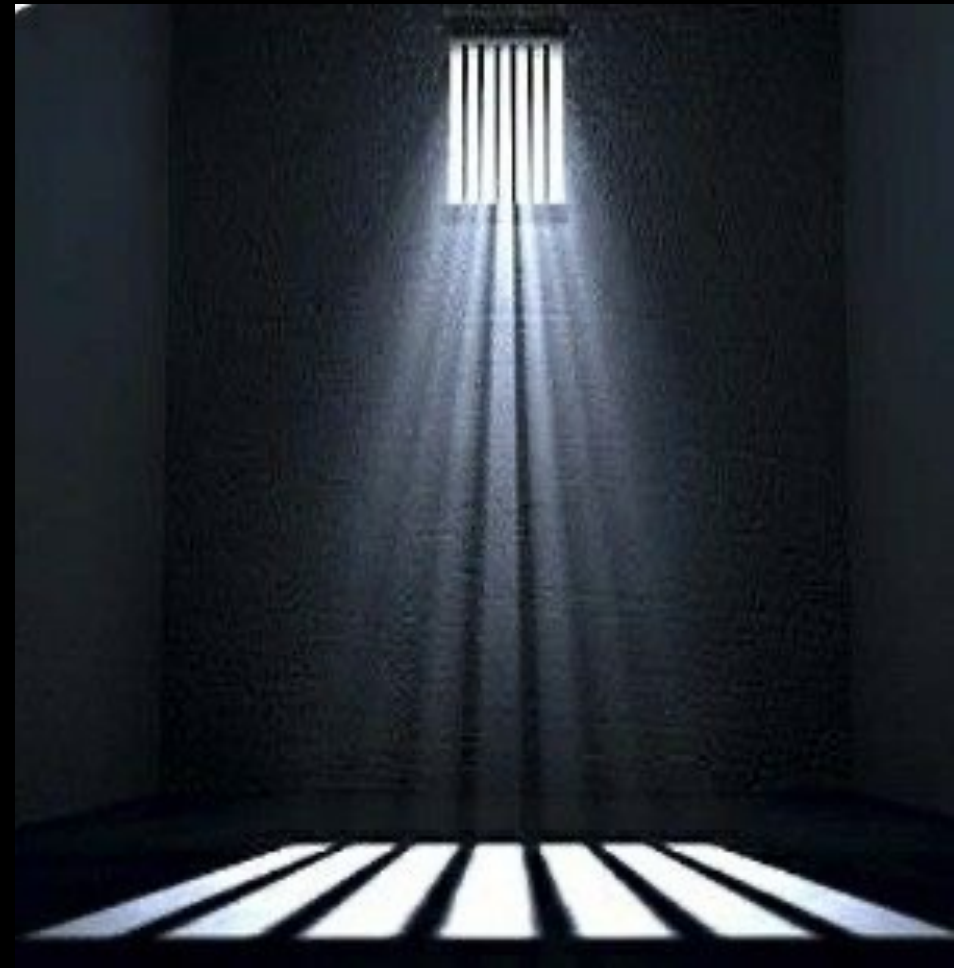
Instagram: [mariewaltemode](https://www.instagram.com/mariewaltemode)



Stage Design

Current Status „Weiße Rose“, Premiere April 2025

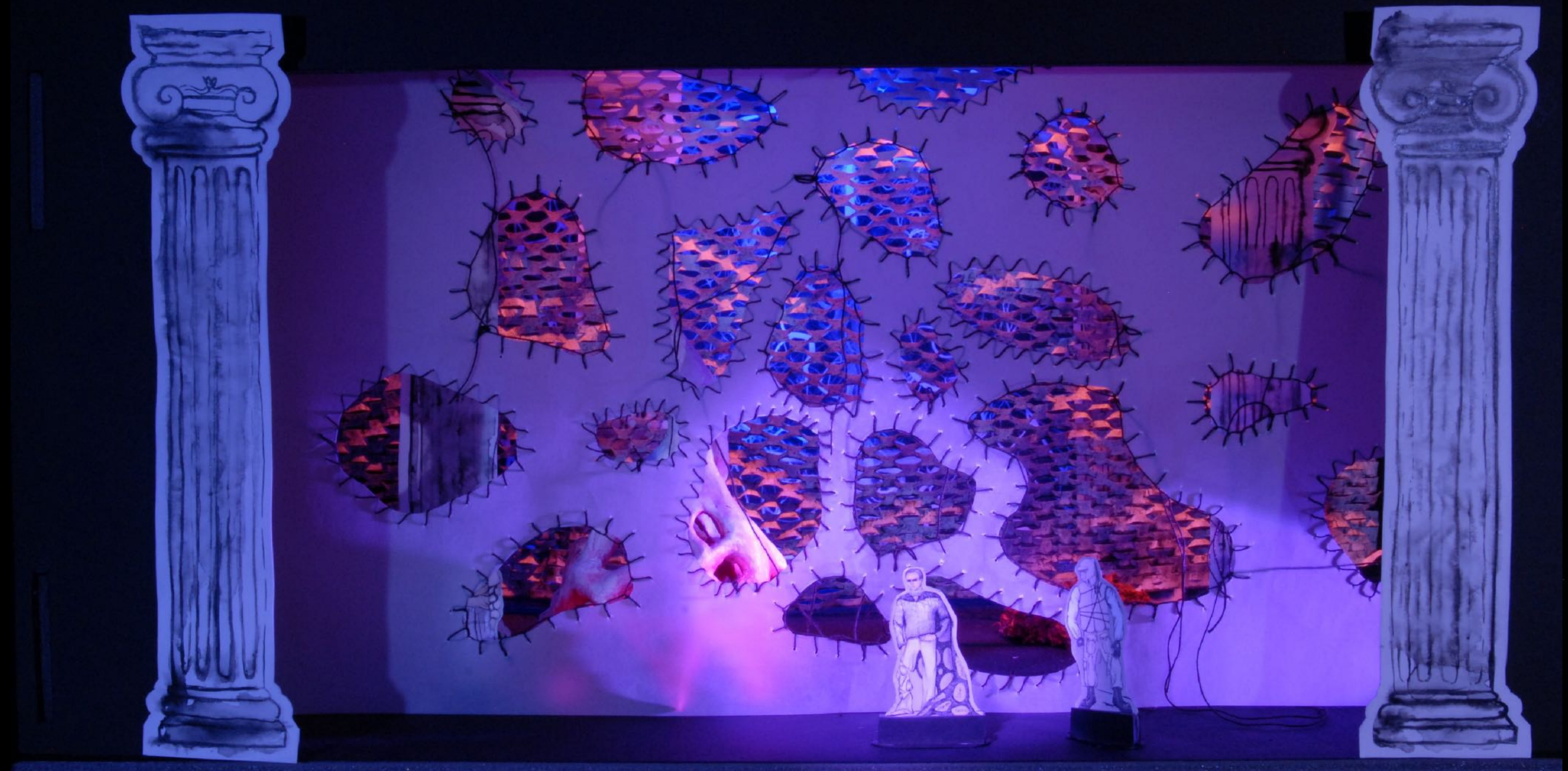
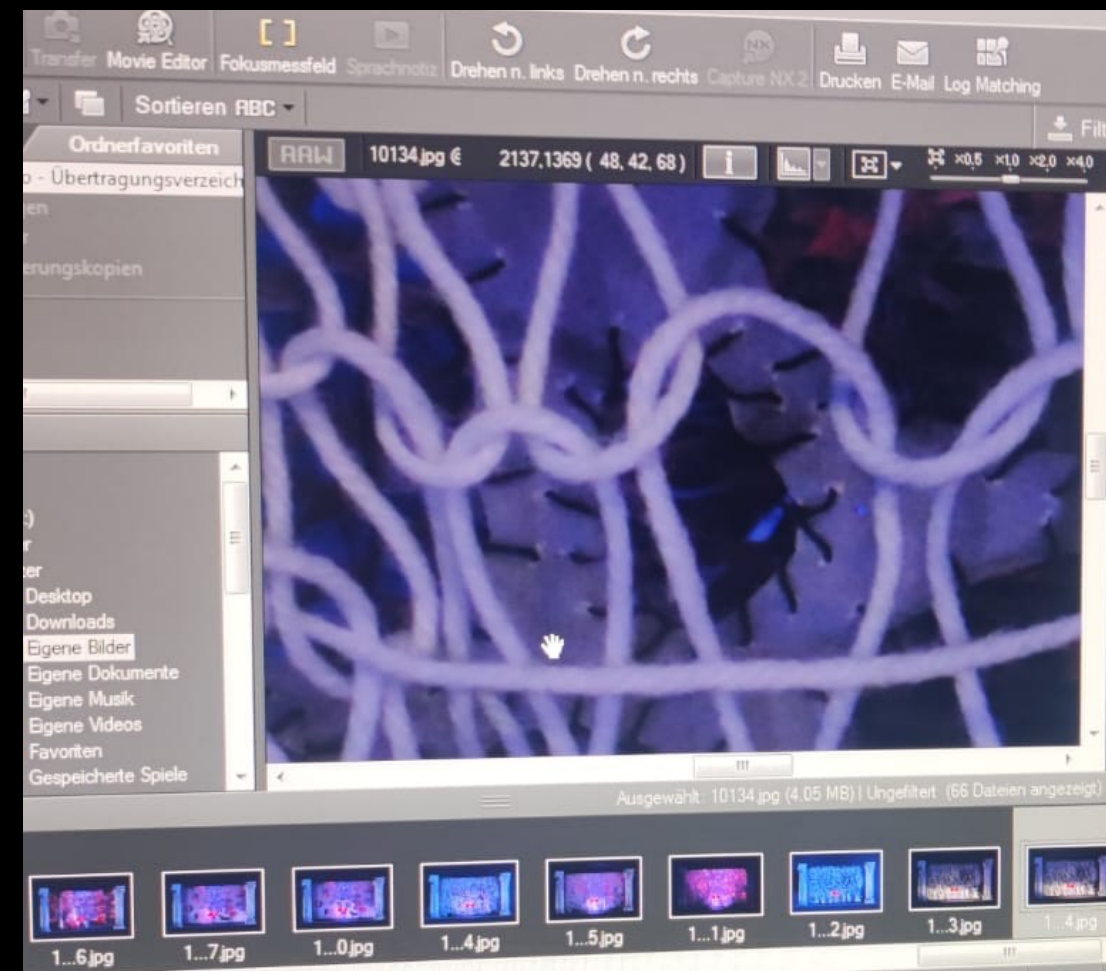
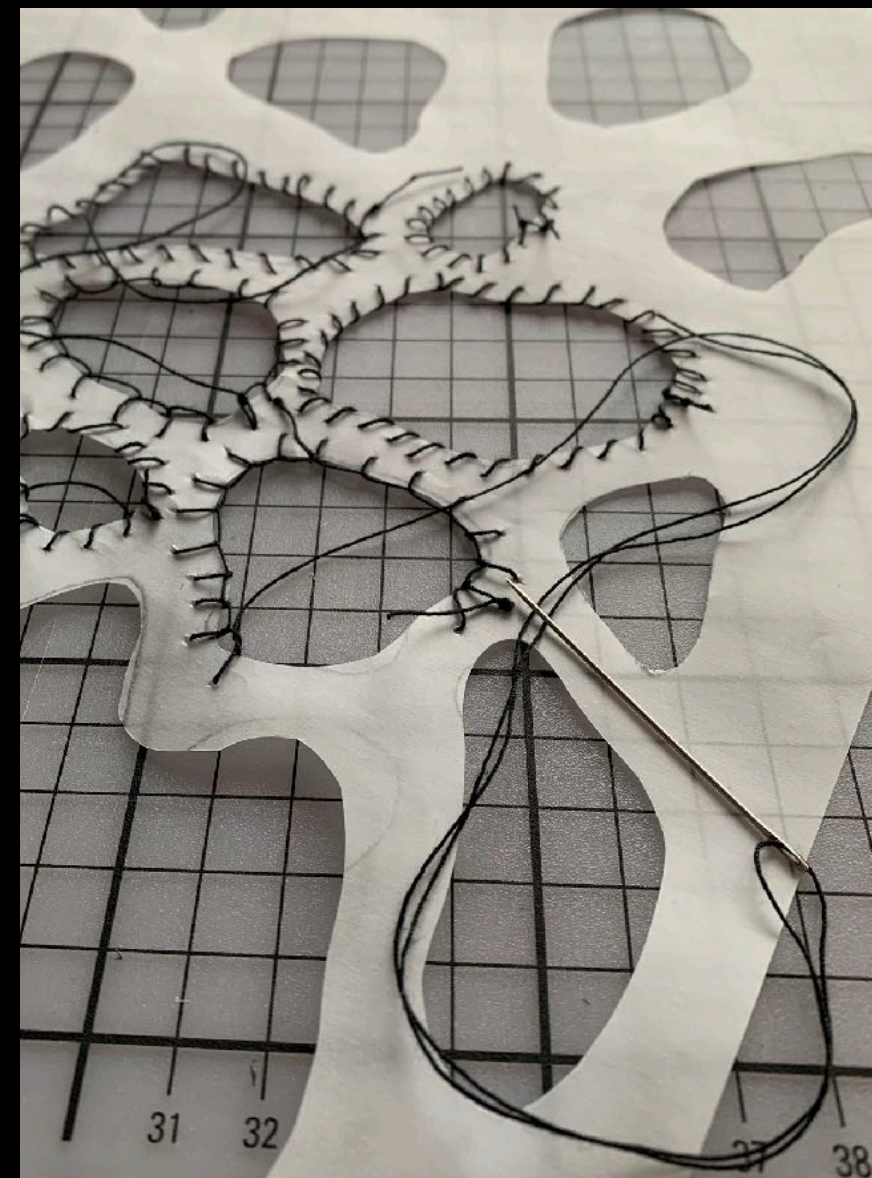
Staatschauspiel und HfM Dresden



„Antigone“ Stage Design

Model, 2023

Different Scenes and Lightsituations,
Process Insides



Scenic Painting



Gobelin Imitation

Painting

Acryl on Jute Fabric,
204x312cm, 2024

Reference:

„The Three Brothers (De Tre
Brødre“ made by Frida Hansen
designed by Gerhard Munthe, Woolen
Thread, 68x105cm, 1900



Landscape Painting

Acryl on Cotton Nettle, 300x400cm, 2023

Reference: „Togrøg” by Edward Munch, Oil on Canvas, 84x109cm, 1900



Architectural
Anamorphosis
Painting
„King Kong is
Back“

Acryl on Black Cotton,
500x285cm, 2024

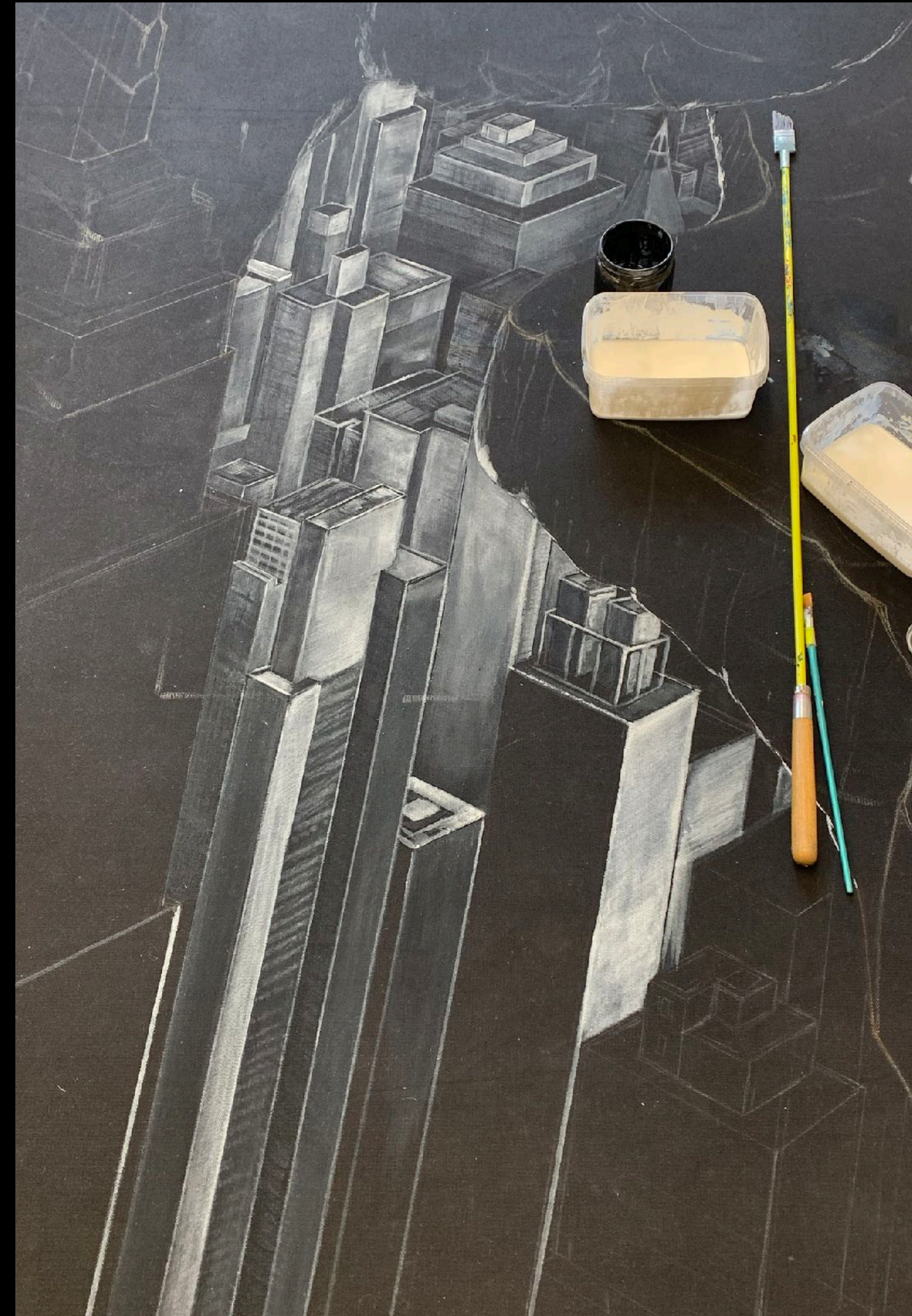
Reference: Selfmade
Collage



Architectural Anamorphosis Painting „King Kong is Back“ - Process

Acryl on Black Cotton, 500x285cm, 2024

Reference: Selfmade Collage



Graphic Imitation Painting

Acryl on Cotton Nettle, 300x180cm, 2024

Reference: „The Beautiful Scottish Girl (La Belle Écossaise)“, Etching on Paper, 24,6x19,6cm, 1913



Sculpture Imitation Painting

Acryl on Cotton Nettle, 300x185cm, 2022

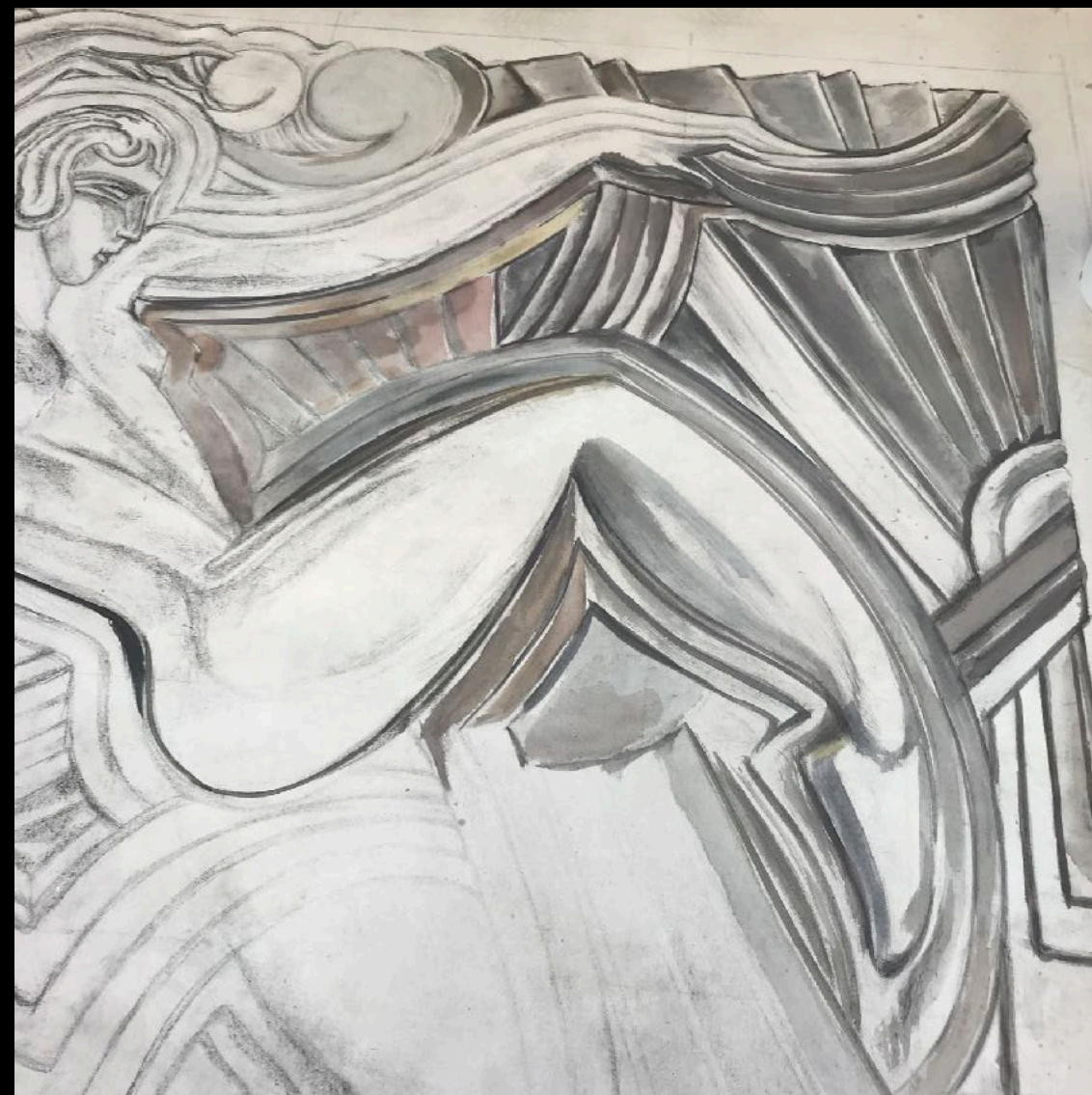
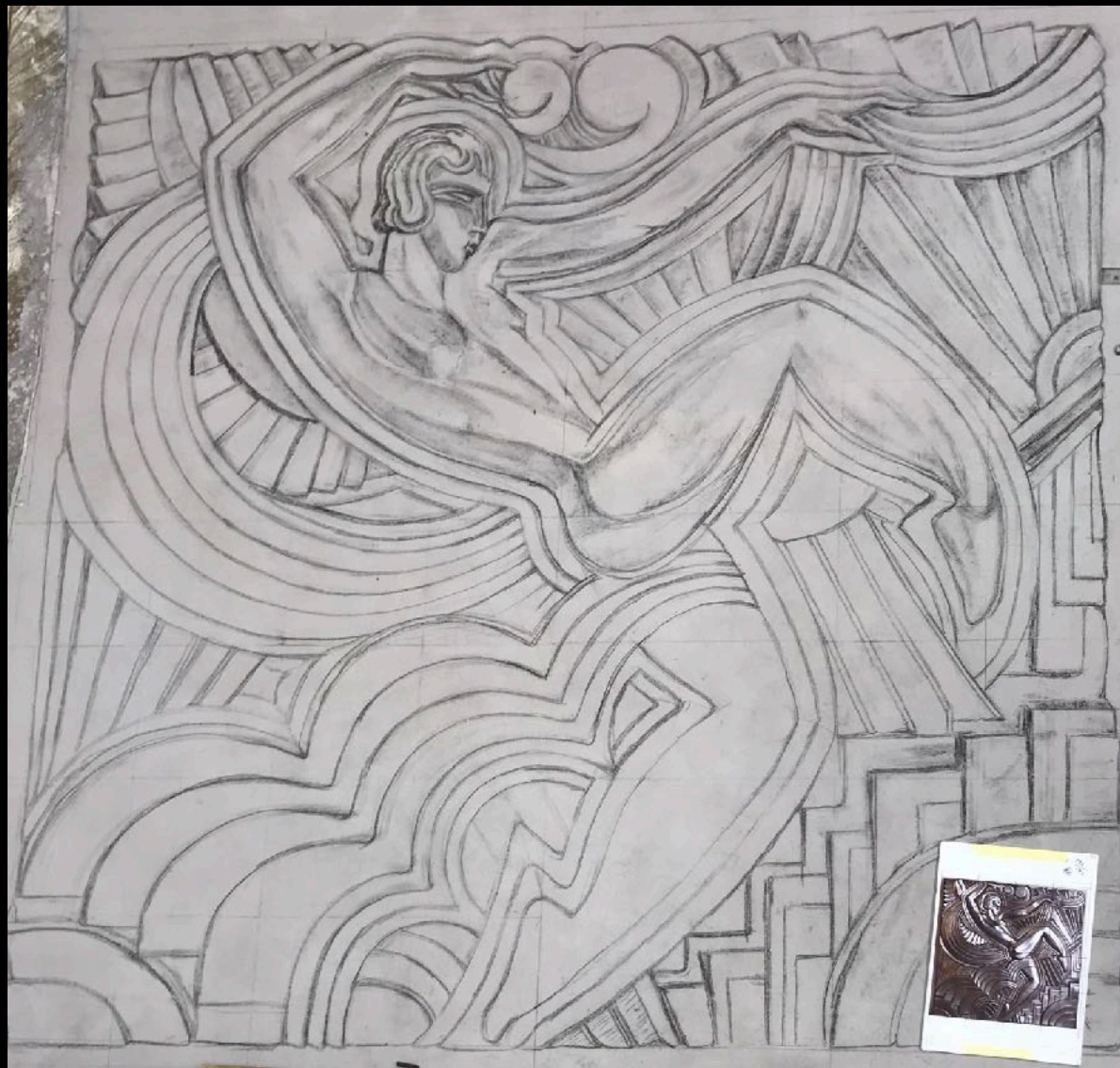
Reference: Bronze Sculpture „Sacred Langure“ by Nichola Theatston, 26x15x17cm, Edition of 15, 2022



Relief Imitation Painting

Acryl on Cotton Nettle, 270x230cm, 2024

Reference: „La Danse“ by Maurice Picaud, ca. 1930



One Week Study

Acryl on Cotton Nettle, 220x220cm, 2022

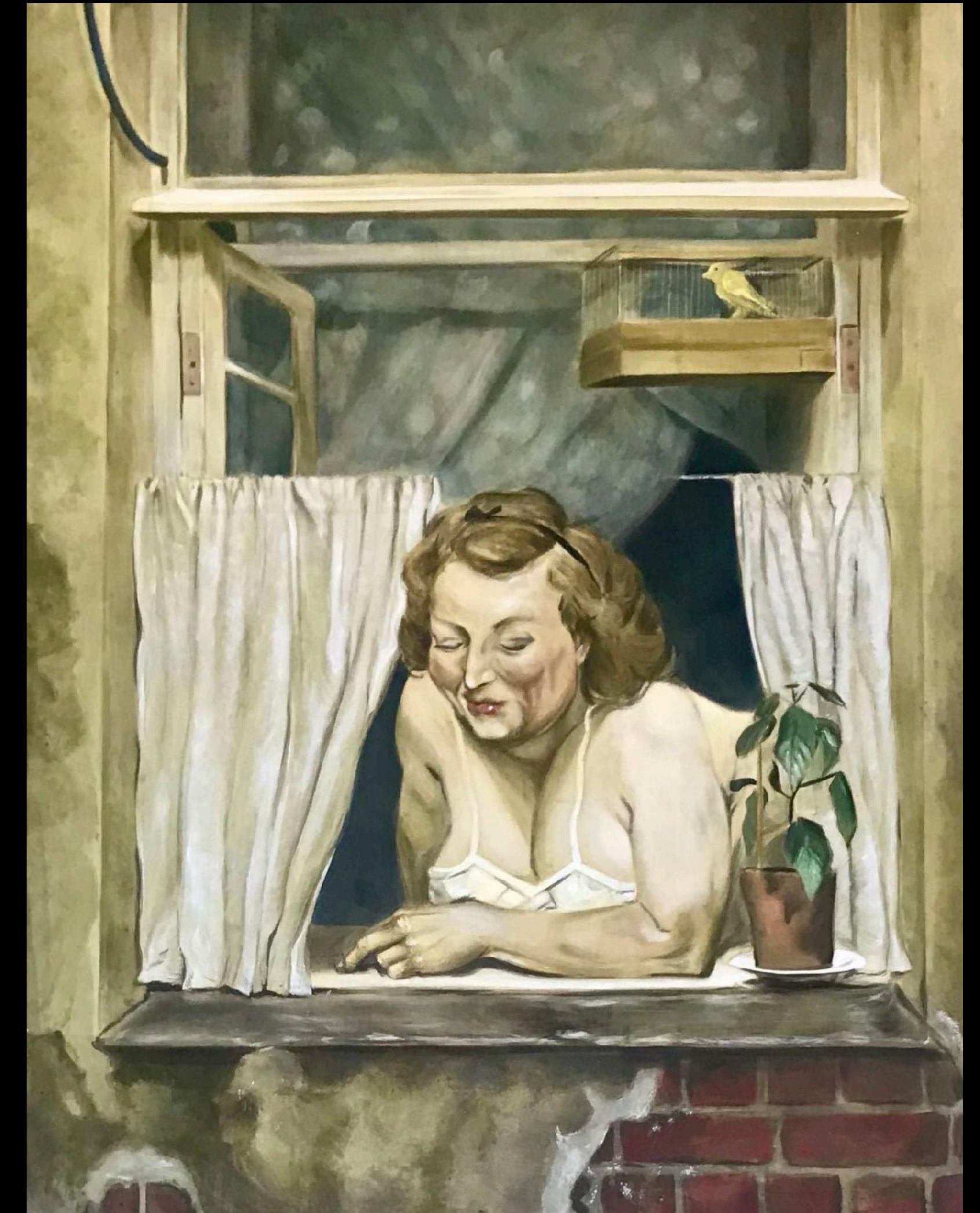
Reference: „Double Portrait“ by Lucian Freud, Oil on Canvas, 88x78cm, 1986




Three Days Study

Acryl on Cotton Nettle, 270x202m, 2022

Reference: „My neighbour from the house across“ by Geliy Mikhailovich Korzhev-Chuvlyov, Oil on Canvas, 1954



A dark, teal-tinted photograph of a street scene. In the foreground, a person wearing a large, dark, fluffy costume with a wide, bushy skirt stands on a paved surface, their arms slightly out. The background shows a row of multi-story buildings with windows and chimneys. The overall atmosphere is moody and artistic.

Scenic Productions and Cooperations

„Jeppe på Berget“ for Nationaltheatret in Oslo

Stage Design: Katrin Bombe



Foto: Erika Hebbert



„En Julefortelling“ (Christmas Carol) for Nationaltheatret in Oslo

Stage Design: Katja Ebbel



Foto: Erika Hebbert

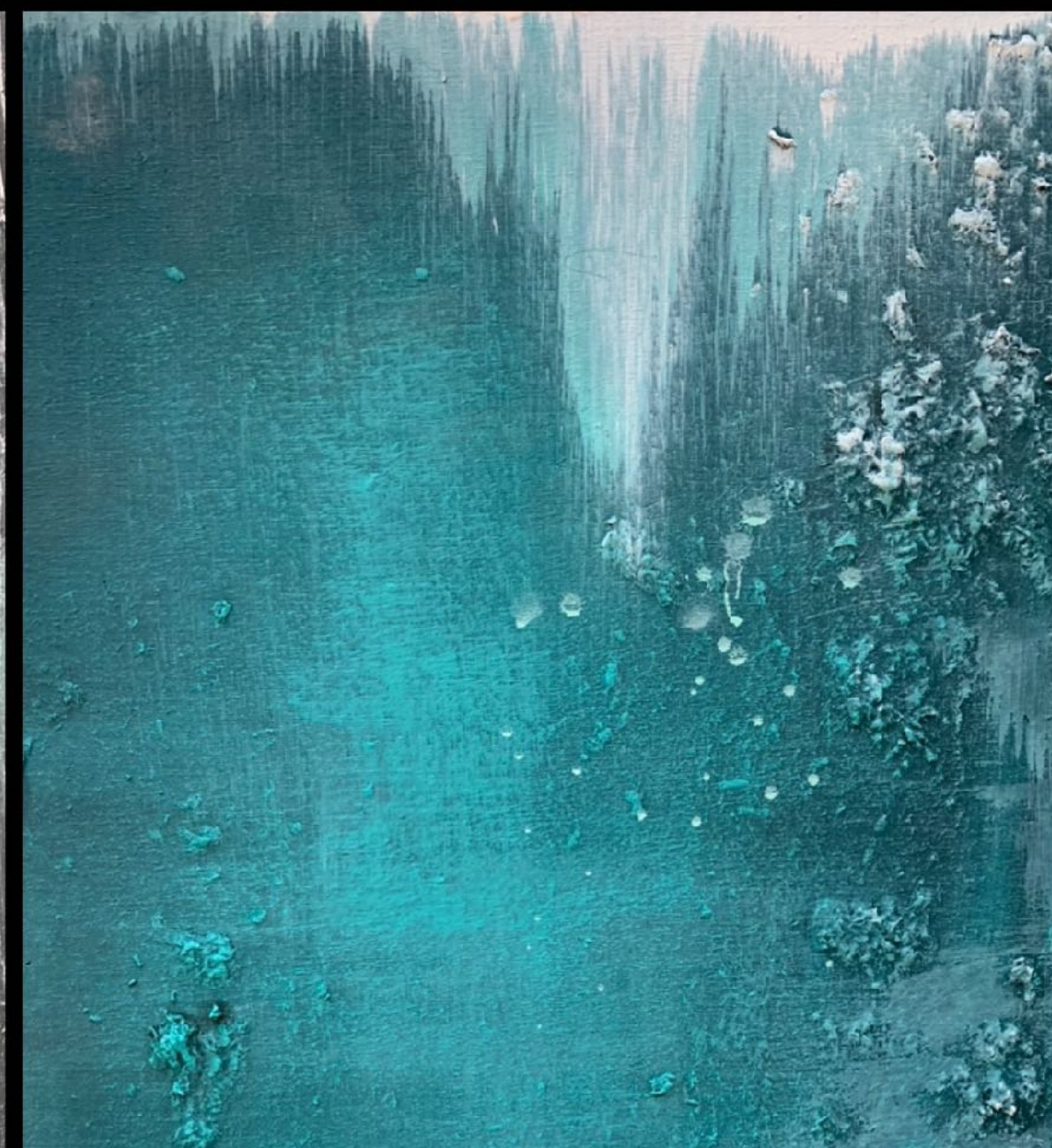


Foto: Erika Hebbert

„En Julefortelling“
(Christmas Carol) for
Nationaltheatret in Oslo



Hofspektakel Puppentheater Magdeburg 2022

Stage Design: Klemens Kühn

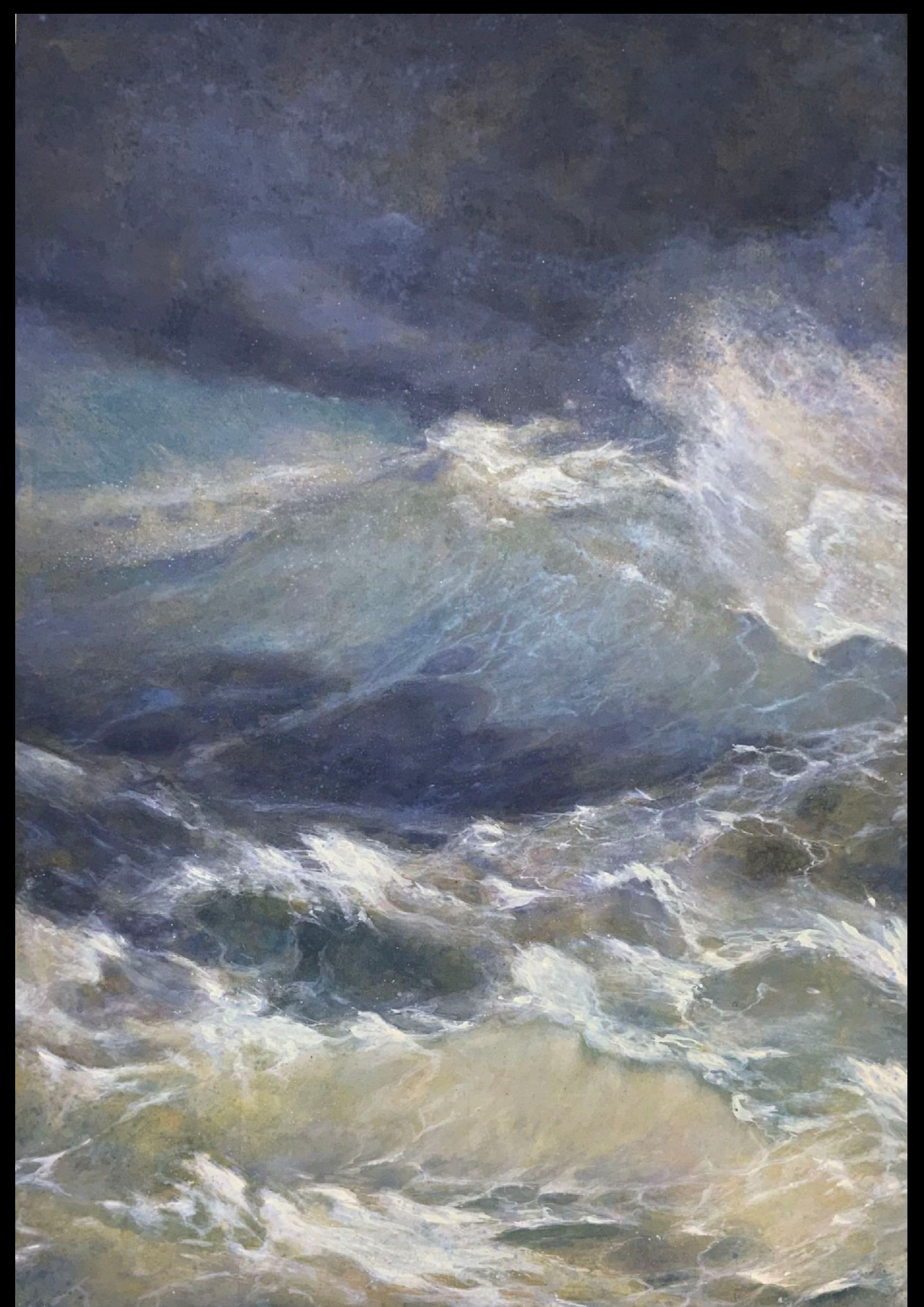
Painting:

Acryl on Cotton Nettle, 360x245cm, 2022

Reference: Detail „Die Woge“ by Iwan Konstantinowitsch Aiwasowski, Oil on Canvas, 1889



Photo: Klemens Kühn



„Den Fantastiske Mikkel Rev“ for Nationaltheatret in Oslo

Stage Design: Ida Grimsgaard

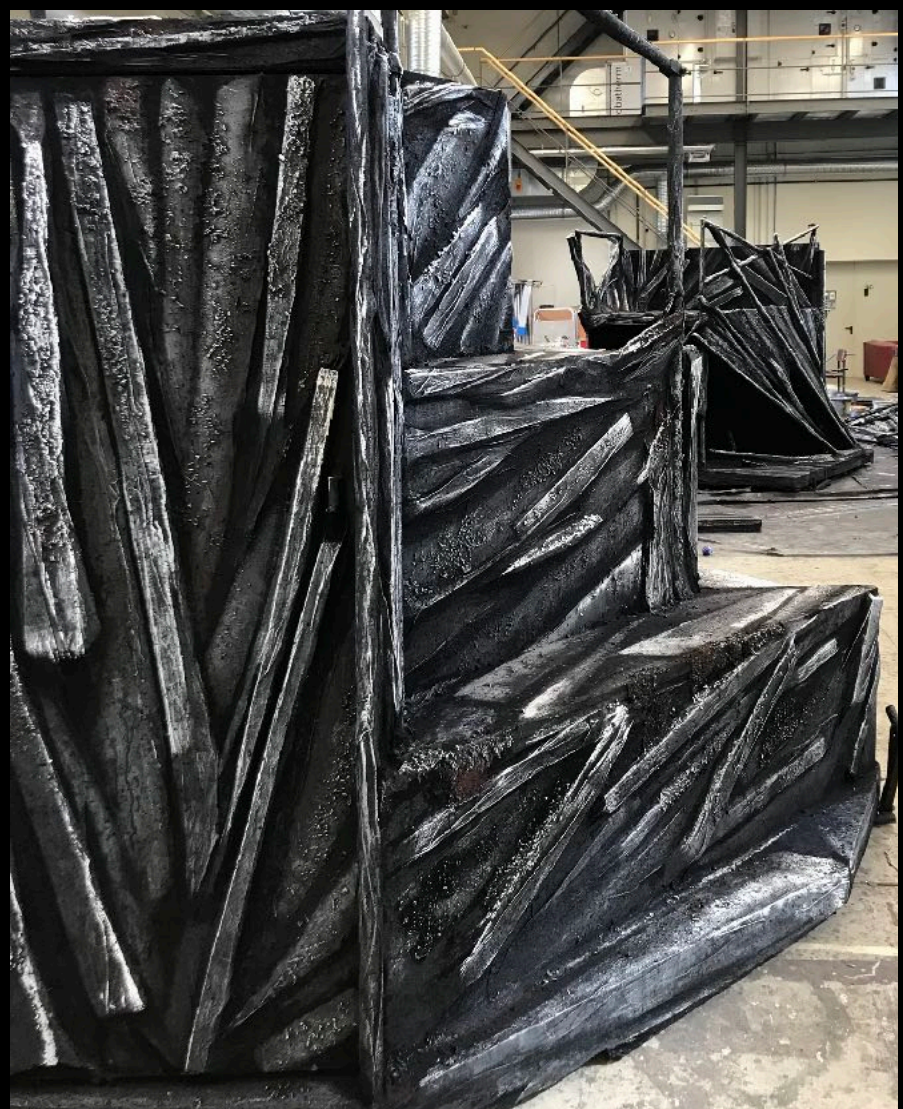


Foto: Erika Hebbert



Foto: Erika Hebbert

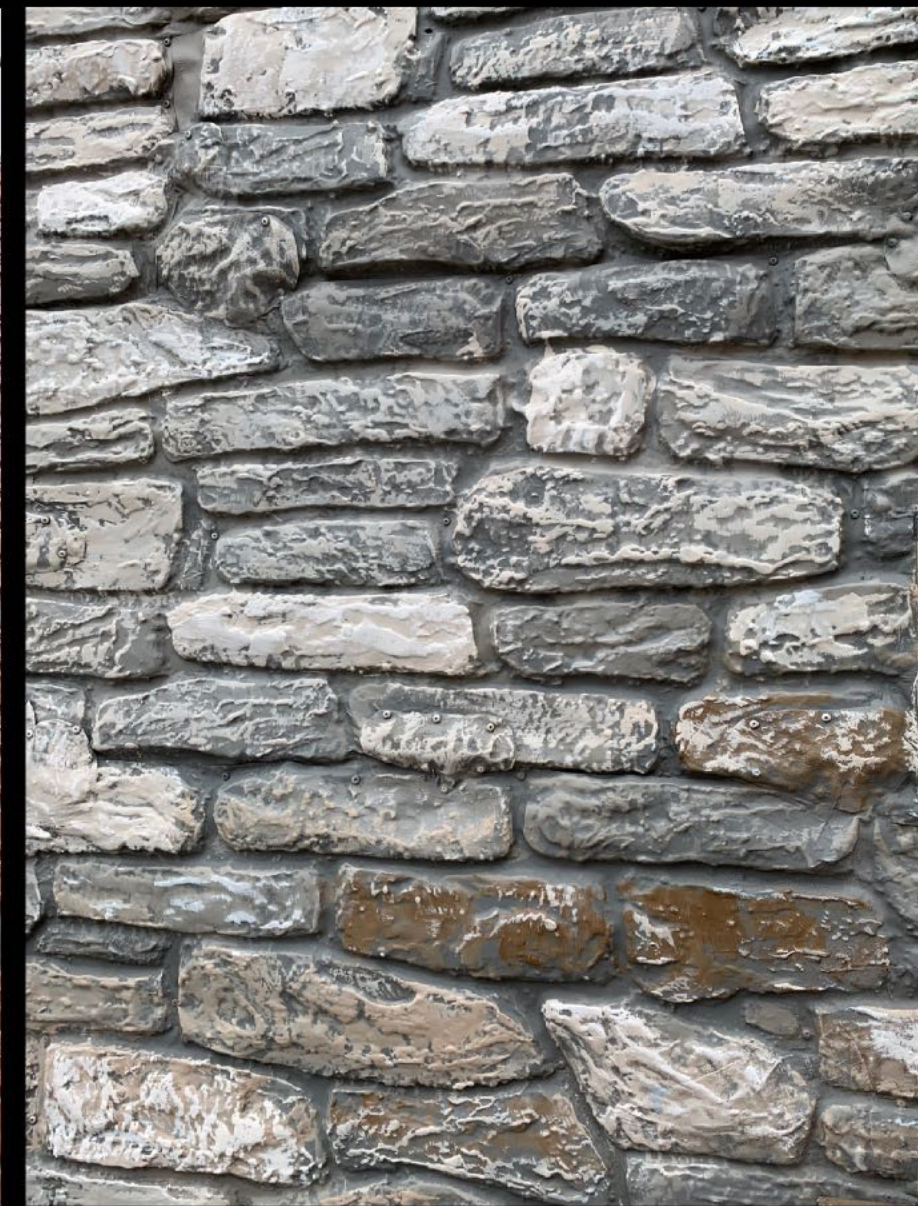
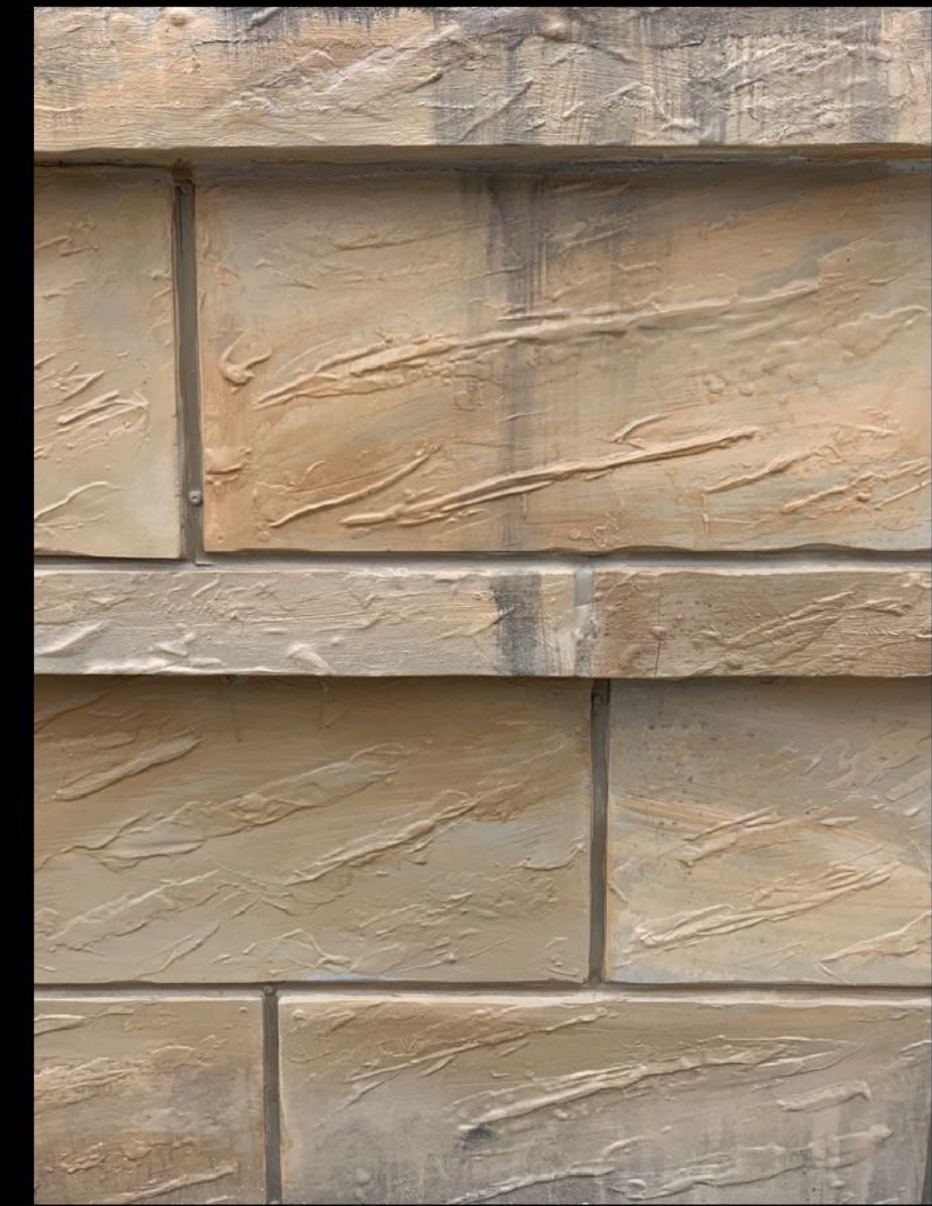
„Duell“ for
Staatschauspiel Dresden
with HfM Dresden
Stage Design: Pauline Malack



Störtebeker Festspiele 2023



Störtebeker Festspiele 2024



Skillset Overview/ Scenic Techniques



Japanese Front Store Imitation

Acryl and Acrylic Paste on Cotton Nettle,
400x500cm, 2022

Co-Work with: Josefin Britt, Emma Rück

Reference: Selfmade photo collage



Rust Imitation

for „Flukt“ at Nationaltheatret in Oslo



Foto: Erika Hebbert



Foto: Erika Hebbert

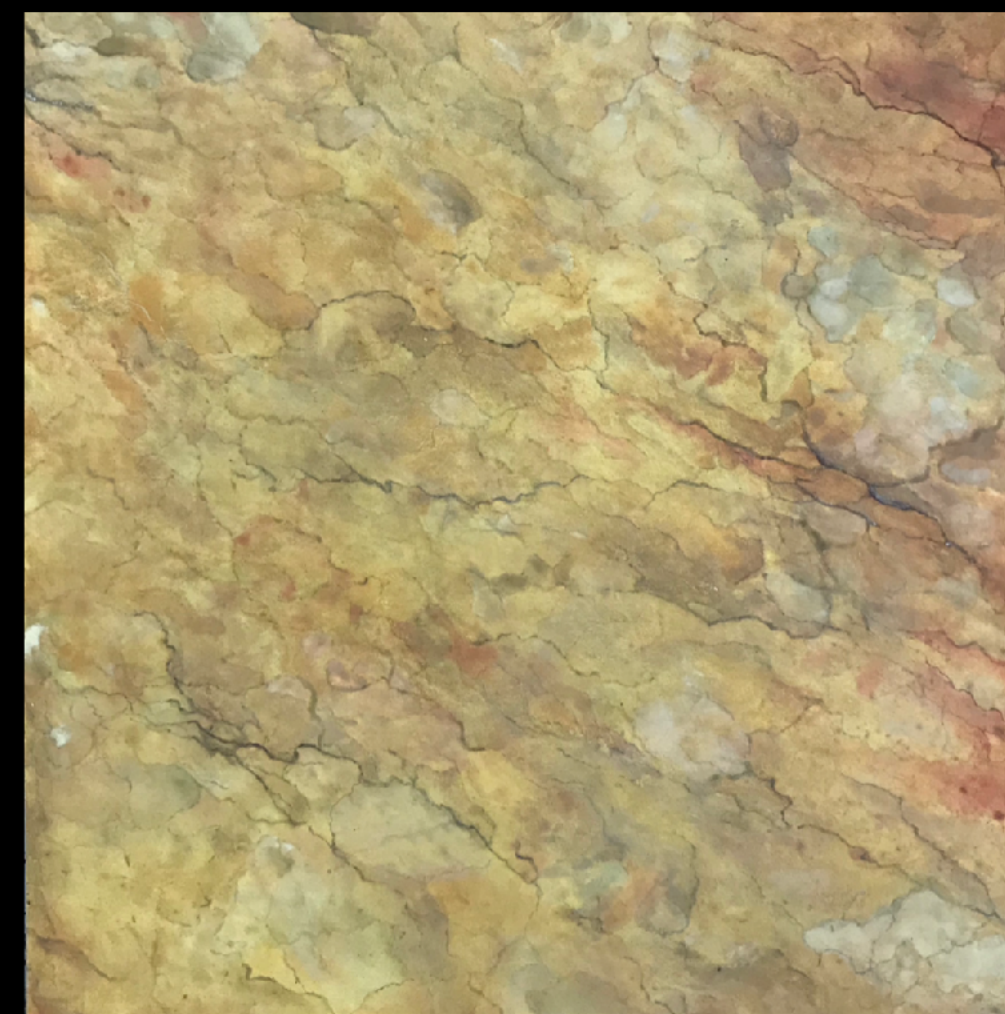
Stone Wall Imitation

Plaster and Acryl on Jute, 120x80cm,
2020



Marble Imitations

Yellow Marble: Acryl on MDF Wood
Checkboard: Acryl on Cotton Nettle for „Jeppe pa
Berget“

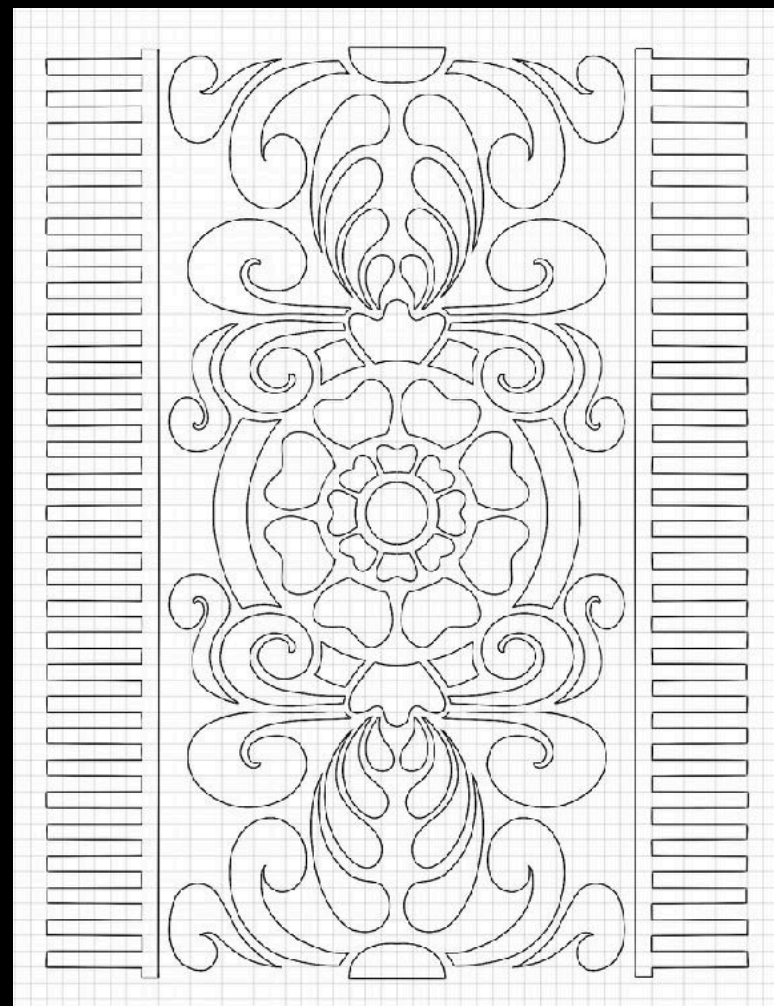


Wood Imitations

Various Wood: Acryl and Cellulose
Glue on Paper
Patinating wood/ painting headwood
for „Flukt“



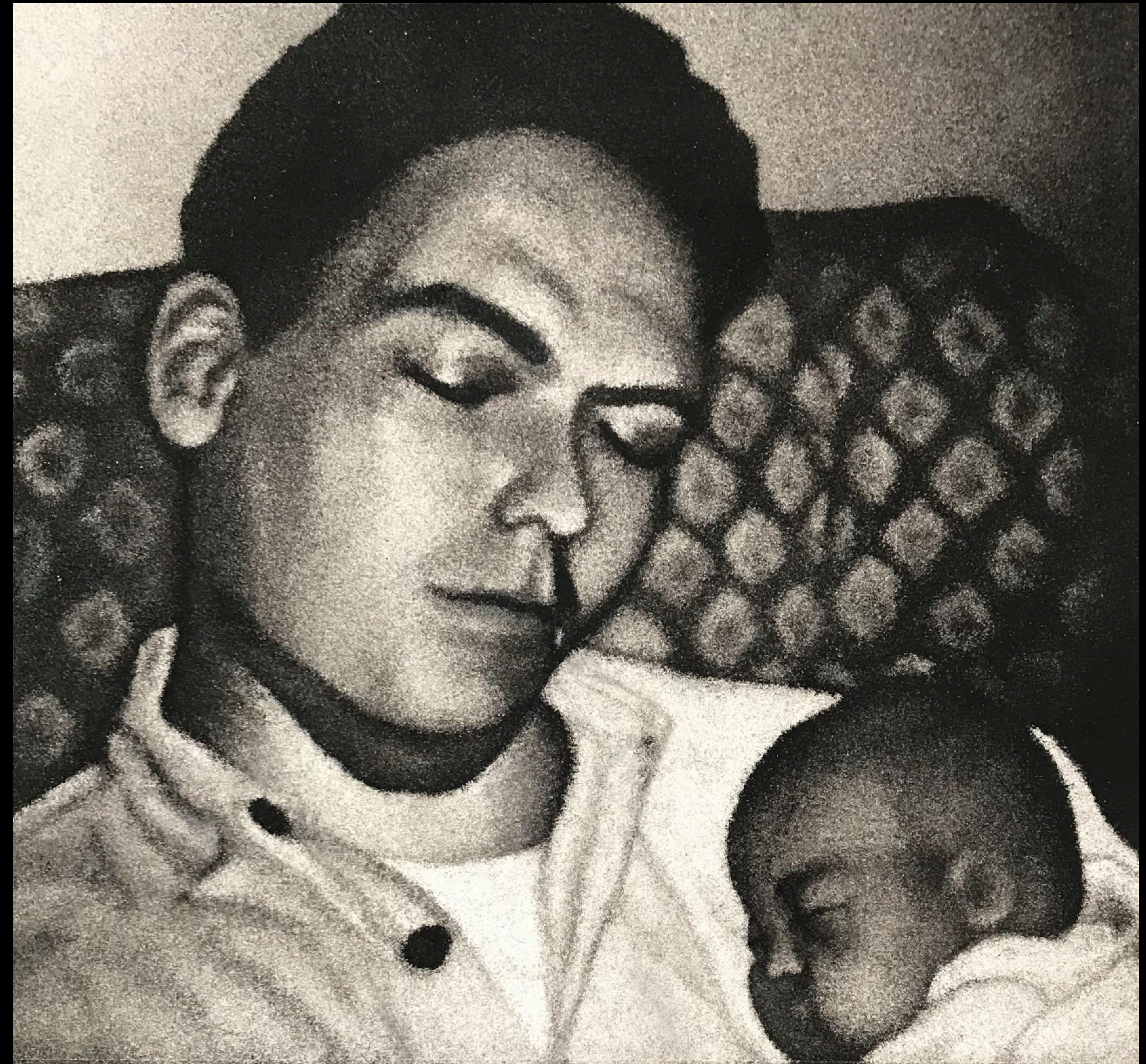
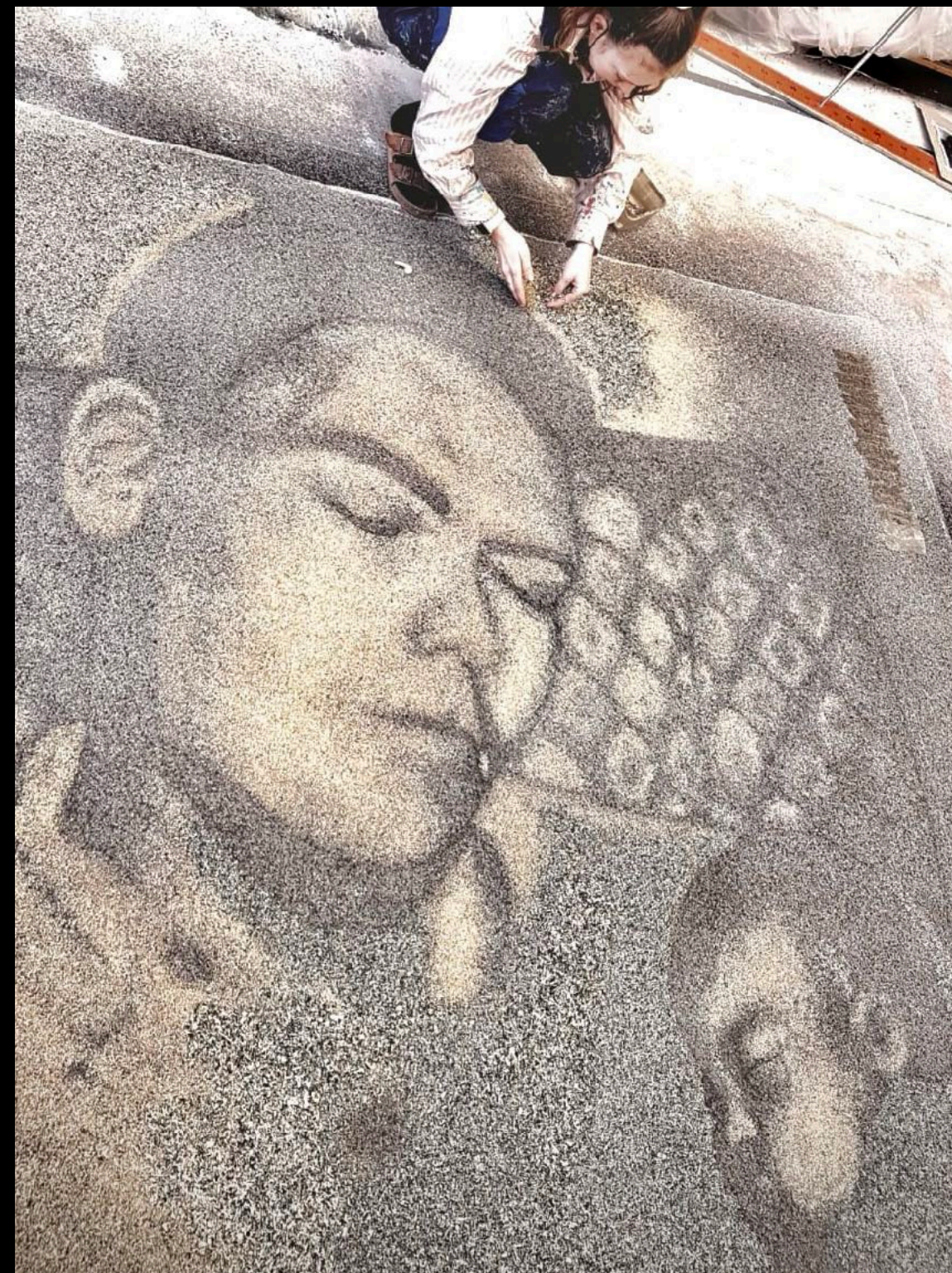
Stencils and Wallpaper making



Spray Paint Study

Acryl on Cotton Nettle, 190x200cm, 2021

Reference: Personal Photo



Historical Theatre Painting Study

Pigments and Bone
Glue on Cotton Nettle,
300x220cm, 2021

Reference: Rainforest
Backdrop by Wilhelm
Plappert, around 1900



Sculpture Portrait „Ralf“

Clay, 38x22x26cm, 2022



Let's get in touch!

Mail: mariewaltemode@icloud.com

Instagram: [mariewaltemode](https://www.instagram.com/mariewaltemode)

